

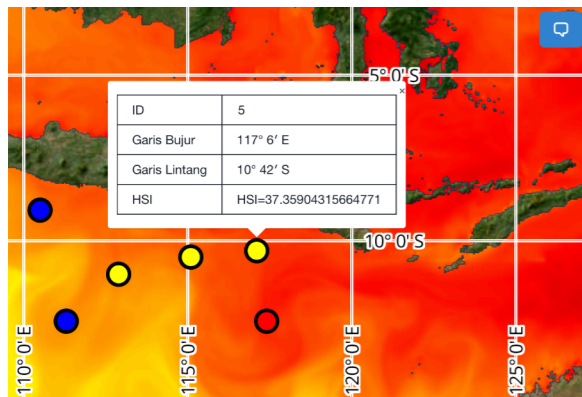
## 【Subscription fee】

If you have any inquiries about FishersNavi Pro such as subscription fee, service data area and so on, please contact us on the e-mail address below.

▪ [info@oceaneyes.co.jp](mailto:info@oceaneyes.co.jp)

## 【Optional function】

You can check the pre-registered point as a circle icon. And the icon color indicates how good fishing point there is.



- Good
- Medium
- Bad



When the popup button is activated (left image), click the circle icon and popup details.

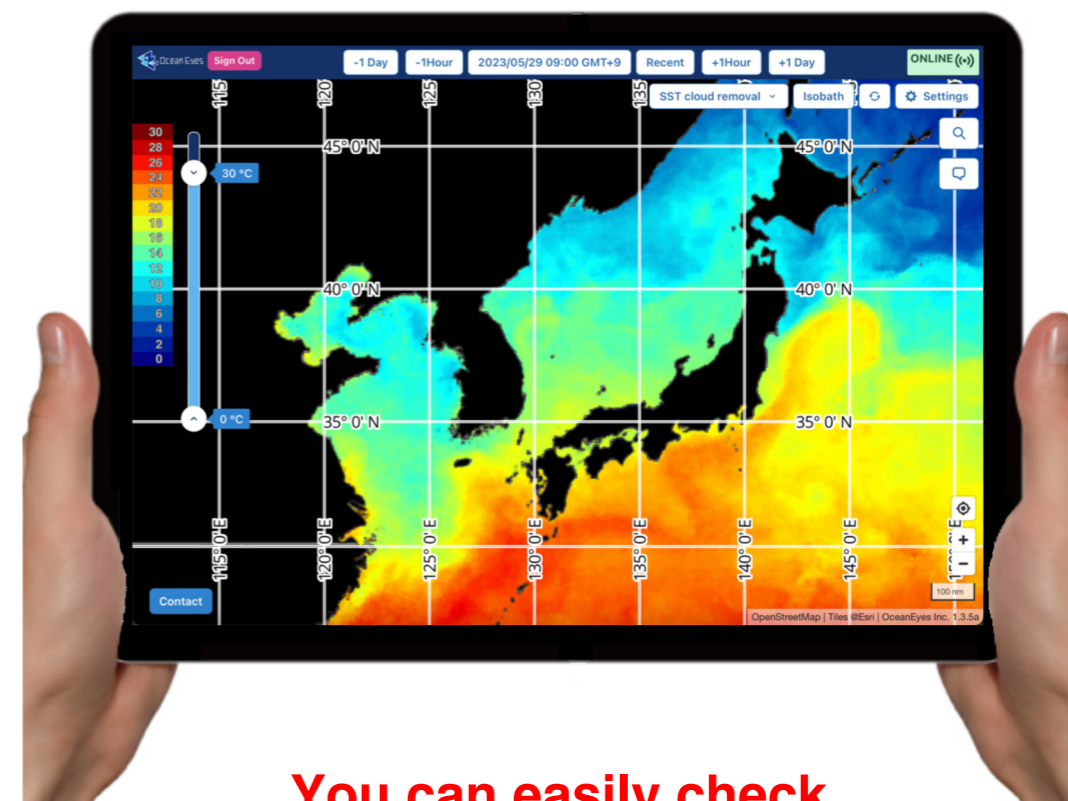
## 【Data details】

Data items	Depth	Details
SST satellite	—	Sea surface temperature from Himawari satellite.
SST cloud removal	—	SST that complemented cloud covered area using of OceanEyes' original technology.
Temperature forecast (Japan coast)	0m 50m 100m 150m 200m	Approximately 2 km mesh sea temperature forecast data calculated using OceanEyes' original numerical model of Japanese coast area.
Temperature forecast (wide area)	0m 10m 30m 50m 100m 150m 200m	Approximately 10 km mesh model sea temperature forecast data broadcasted by Copernicus (EU).
Current forecast (Japan coast)	0m 50m 100m 150m 200m	Approximately 2 km mesh sea current direction and speed forecast data calculated using OceanEyes' original numerical model of Japanese coast area.
Current forecast (wide area)	0m 10m 30m 50m 100m 150m 200m	Approximately 10 km mesh model sea current direction and speed forecast data broadcasted by Copernicus (EU).
Sea level anomaly	—	Approximately 10 km mesh model sea level data broadcasted by Copernicus (EU).
Chlorophyll	—	Sea surface chlorophyll a observation data from satellite.
Shiome (wide area)	0m 10m 30m 50m 100m 150m 200m	Shiome forecast calculated using Copernicus model data.

If you want to know more about FishersNavi Pro, please check the URL below.

▪ <https://oceaneyes.co.jp/en/fnavipro-2>

# FishersNavi Pro

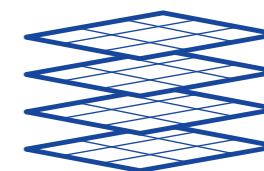


**You can easily check the ocean data whenever you need !**

You can use FishersNavi Pro with your own tablet or PC.



You can use multiple layer data for each target fish.



Support for planning fishery operation by the past present and future ocean data.



Ocean Eyes Co., Ltd.

oceaneyes.co.jp

info@oceaneyes.co.jp



Official LINE @884ooqmy

“I want to know upcoming ocean conditions forecast.”

“I want information to determine where I should go.”

In those cases, **FishersNavi Pro** will help you!

You can use sea temperature, current data, Chlorophyll a, sea level and shiome (line between two currents) data for finding fishing ground and sailing route!

You can control the colorbar of sea temperature and current data!

You can check the distance and direction between two points ! Pop-up show detail data of the clicked point !

## User's Guide

### Select time

Display selected time data on map. Click the date button and choose date and time from calendar. Increment or decrement a day or an hour with side button.

### Control colorbar

Click the colorbar and adjust the max and min value of colorbar to be useful for you.

### Select data items

Display selected data item on map.

### Select depth

Display selected depth data on map.

### Contact

Jump to inquiry form. If you have any inquiries about FishersNavi Pro such as subscription fee, service data area and so on, please feel free to use the inquiry form.

### Contour line and Isoline toggle

Switch show / hide contour line and Isoline with each button.

### Reload

Reload latest data when your device is connecting internet.

### Location

Map shows your location if you allow "FishersNavi Pro" to access device's location.

### Online / Offline status

You can check your Online / Offline status. And you can use cached data when "OFFLINE".

OFFLINE

### Setup

Choose the Longitude and Latitude description and change your language settings.

### Popup pinpoint data

Pop-up shows detail data of the clicked point.

153° 30' 19" E, 39° 18' 8" N  
0m Temperature forecast (wide area)  
14.10 °C

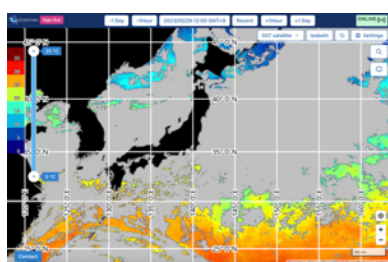
### Distance

Show the distance between two point and direction to second point.

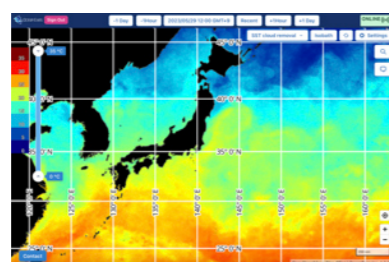
152° 35' 49" E, 42° 45' 42" N  
0m Temperature forecast (wide area)  
10.60 °C  
Marker Position  
156° 50' 34" E, 40° 35' 8" N  
Distance/Bearing 230.33 nm, -54°

## FishersNavi Pro Data Item

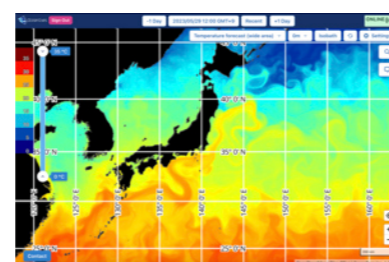
SST Satellite



SST cloud removal



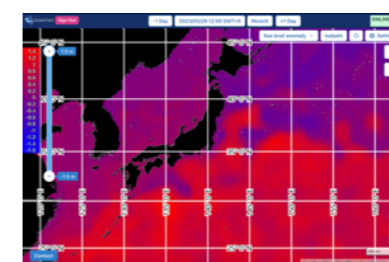
Temperature forecast (Japan coast / wide area)



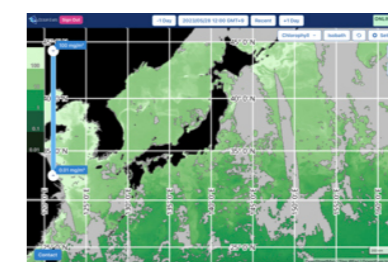
Current forecast (Japan coast / wide area)



Sea level anomaly



Chlorophyll



Shiome (wide area)

