

# Standard Organ Model

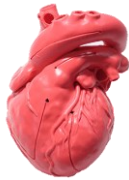


▲ Lineup

## Cardio Model E.V.



【XC-03T】  
Red  
**\$499.99**



【XC-04T】  
Transparent  
**\$949.99**



【XC-05T】  
Color  
**\$999.99**



The model has 6 cuts, which makes it easier to understand the internal structure of the heart.

## Adult Normal Heart Model

【XC-01T】  
Red  
**\$1,999.99**



【XC-02T】  
Transparent  
**\$2,859.99**



This is non-cut model. Since the coronary artery and vein lumen is hollow, it is possible to insert a catheter or the like into the coronary artery or cardiac lumen.

## Congenital Pediatric Heart Disease Model

【XC-01CDc】  
VSD/Red  
**\$979.99**



【XC-02CDc】  
ASD/Red  
**\$979.99**



【XC-03CDc】  
ccTGA+VSD/Red  
**\$1,199.99**



【XC-04CDc】  
TOF/Red  
**\$1,049.99**



This model reproduces four typical congenital pediatric heart diseases, VSD, ASD, ccTGA + VSD, and TOF, based on actual patient CT data. Each model is a cut type that makes it easy to check the internal structure.

## Pediatric Normal Heart Model

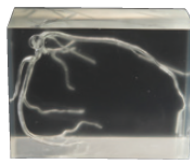
【XC-05CDc】  
Red  
**\$979.99**



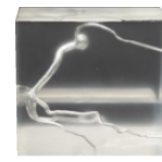
The model has cuts. It can be better understood by comparing it with a congenital pediatric heart disease model.

## Coronary Artery Model

【XC-06P】  
Transparent/LCA  
**\$900.00**



【XC-07P】  
Transparent/RCA  
**\$900.00**



The lumen of the left or right coronary artery is represented in a transparent block-shaped model. Since the artery is hollow, it is possible to insert a catheter and check the movement of medical devices. By putting it in water, the transparency will increase.

## Aortic Arch Model

【XC-02P】  
Red / No Valve  
**\$150.00**



【XC-03P】  
Transparent / No Valve  
**\$200.00**



【XC-04P】  
Red / with Valve  
**\$300.00**



【XC-05P】  
Transparent / with Valve  
**\$350.00**



This model, which expresses ascending aorta and aortic valve. Since the inside of the blood vessel is hollow, it is possible to insert a medical device. Four types are available so that you can choose according to your needs.

\*All prices are in US dollar.

## Normal Heart Four Valve Model

【XC-01P】  
Red  
\$280.00



This model represents only four valves and their periphery based on standard adult normal heart CT data. Each valve can be easily observed from both sides of the atrium and ventricle.

## Normal Heart Atrium Model

【XC-08P】  
Transparent  
\$1,480.00



This is an adult heart without the ventricle. You can observe the valve from the ventricular side.

## Chest Model

【XO-01】  
\$2,500.00



This model consists of lungs, heart, and bronchi. Since each parts can be separated, you can observe the running of the pulmonary arteries and veins from between the lobes.



▲ Lineup

## AVR Training Model

【XC-01AVRSET】 \$1,310.00



### Set contents

- ▶ Aortic Root Model\*
- ▶ Artificial Valve Model\*
- ▶ Holder Handle
- ▶ Suture Holder
- ▶ Flexible Arm
- ▶ Fixing Clip
- ▶ Table

【XC-01STAND\*】



【XC-01AT\*】 【XC-01AV\*】  
Aortic Root Artificial Valve  
Model Model



\*Single item

The AVR training model is developed as for training the procedure of the adult aortic valve replacement. You can easily practice anywhere.

## Surgery Training Model



【TGA Set】  
Set Price \$270.00



### Set contents

- ▶ XC-01CT: TGA Heart Model
- ▶ XC-CT\_Stand-A: Dedicated Stand
- ▶ XC-CT\_Holder: Suture Holder

【TOF Set】  
Set Price \$295.00



### Set contents

- ▶ XC-02CT: TOF Heart Model
- ▶ XC-CT\_Stand-B: Dedicated Stand
- ▶ XC-CT\_Holder: Suture Holder

【HLHS Set】  
Set Price \$355.00



### Set contents

- ▶ XC-03CT: HLHS Heart Model
- ▶ XC-CT\_Stand-B: Dedicated Stand
- ▶ XC-CT\_Stand-C: Dedicated Stand
- ▶ XC-CT\_Holder: Suture Holder

【VSD Set】  
Set Price \$275.00



### Set contents

- ▶ XC-04CT: VSD Heart Model
- ▶ XC-CT\_Stand-B: Dedicated Stand
- ▶ XC-CT\_Holder: Suture Holder

【AVSD with TOF Set】  
Set Price \$330.00



### Set contents

- ▶ XC-05CT\_A: AVSD Atrium Part
  - ▶ XC-05CT\_V: AVSD Ventricle part
  - ▶ XC-CT\_Stand-B: Dedicated Stand
  - ▶ XC-CT\_Holder: Suture Holder
- \*Option item  
XC-05CT\_S: Valve Sheet (1set=3 sheets)

Surgery Training Model is used for the purpose of surgical technique training for typical congenital heart diseases. You can train incisions and sutures practically and easily anywhere.

\* The contents of the set can also be purchased separately.

### « CONTACT »

crossMedical, Inc.

▶ Email: [info@xcardio.com](mailto:info@xcardio.com)

<https://www.xcardio.com/>

